



MATERIAL SPEED DESIGNS

Mustang Paddle Shifter Install Guide

Rev. 1

Install Difficulty: Easy

Disclaimer: Material Speed Designs and its affiliates are not liable for you or any third party for any loss of profit, property, or any indirect, direct, consequential, incidental, or accidental damage that can arise from installing parts.

Parts: Mustang Touring Series, Mustang Formula Paddles, Mustang Pro Series

What you'll Need:

1. T20 Torx Bit
2. 4mm Allen Key (or similar size)
3. 10 mm socket
4. ¼" Ratchet
5. Cordless Drill
6. 3/32" Drill Bit
7. Pliers
8. Plastic Trim Removal Tools (optional)
9. Self Tapping Screws x2 (included)
10. Alloy Pins (included)

Installation Process:

Step 1: Make sure your car is off and you are in a safe place to work. This install can take anywhere from 45 min - 1 hr 30 min.

Step 2: Open the hood and locate the battery terminal on the upper left side of the engine bay.

Step 3: Remove the battery cover by twisting off the (3) plastic finger screws.

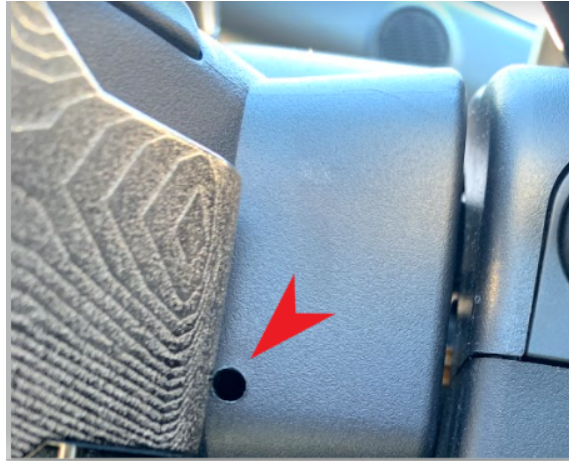
Step 4: Using the 10 mm socket and ¼" ratchet remove the **NEGATIVE BATTERY TERMINAL FIRST** and place it to the side. Then remove the **POSITIVE BATTERY TERMINAL SECOND.**



Step 5: Once the battery is disconnected and the terminals are in a good place, move to the inside of the vehicle.

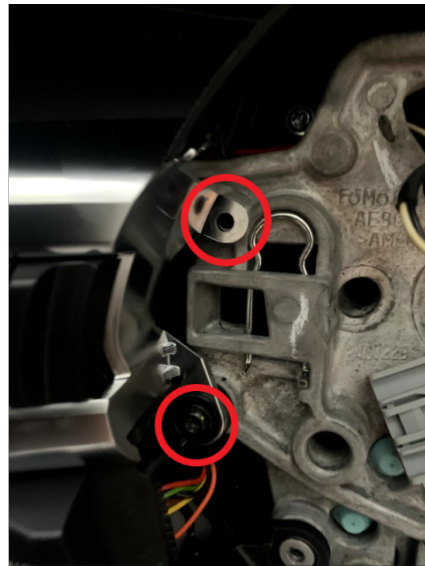
Step 6: On both sides of the steering wheel, you will notice small holes. You will use your 4mm (or similar size) allen key and push straight into the wheel to release the clip holding the airbag. Do this on both sides and take your time, as the first side is usually easy and the second side can be trickier. You can start on either side.

3

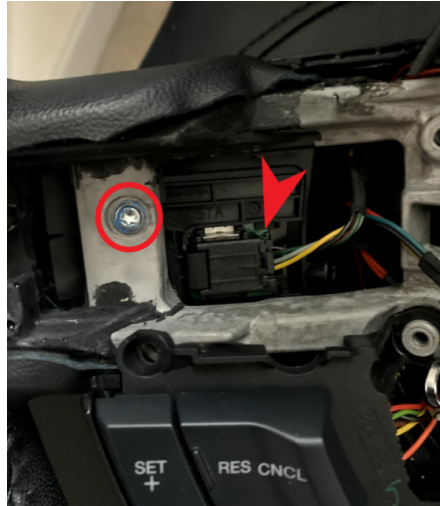


Step 7: Once the airbag is released from the clips, take a picture of how the airbag is wired on the steering wheel and then remove the wires. Place the airbag to the side.

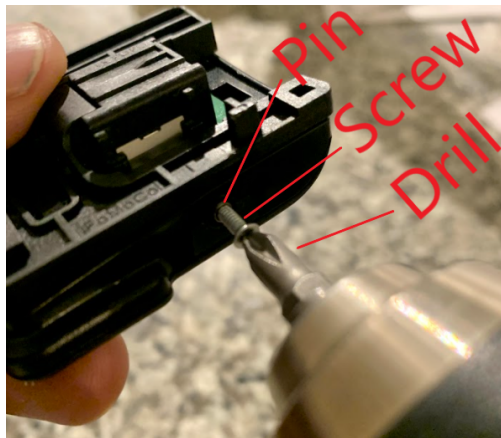
Step 8: Use your T20 torx bit and remove the screws holding the trim together. Pull off the trim and you will gain access to the paddle shifters. You don't need to remove the wires.



Step 9: Gently disconnect the wires holding the paddle shifter and remove the screw holding it to the steering wheel frame. Do this for both sides.



Step 10 (Option 1): Using the self tapping screws included with your order, line up the screw and insert it like the picture below.



Using your drill, slowly engage the drill so that the self tapping screw digs into the spring pin just enough to hold it. Now using pliers, pull on the self tapping screw and pull the spring pin out of the paddle housing.



Step 10 (Option 2): Using the cordless drill and 3/32" drill bit, remove the spring pin located on the bottom side of the paddle. Place the drill bit on the pin and drill into the pin SLOWLY until the drill meets resistance inside the spring pin. Once the drill meets resistance it will feel like it is stuck, spin the drill bit fast to unseat the spring pin while pulling in an outward motion. Use pliers to pull the spring pin completely out, as this will separate the paddle housing assembly. Click [here](#) to see a video of this process.

You do not need to drill all the way into the spring pin, just enough to get the drill bit "stuck" into the spring pin. If you drill too far in and the pin will not spin or come out, just reverse the direction of the drill and the bit will clamp back down on the pin and you will be able to remove the spring pin.



Step 11: Place the Touring, Formula, or Pro paddle on the OEM paddle housing and use the provided pin to connect both halves together.



Step 12: Place the new paddles on the steering wheel and re-assemble the steering wheel. **MAKE SURE EVERYTHING IS CONNECTED BEFORE YOU PUSH THE AIRBAG BACK INTO PLACE.**

Step 13: Reassemble the battery housing by connecting the **POSITIVE BATTERY TERMINAL FIRST** and then connecting the **NEGATIVE BATTERY TERMINAL SECOND.**

Step 14: Turn the car on and let it run for a bit. Whenever you disconnect the battery the computer has to resync. Go for a drive and enjoy your paddle shifters!